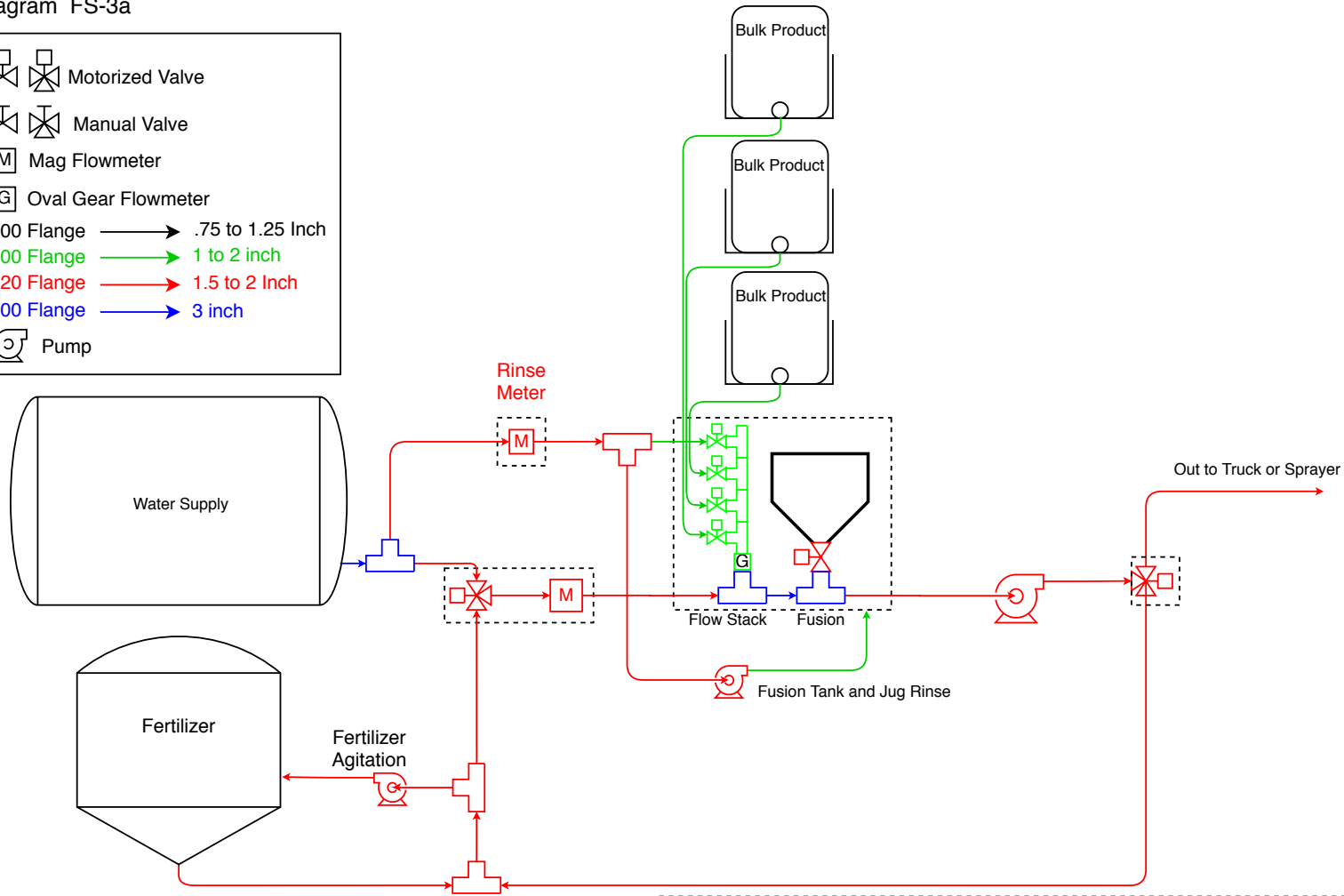
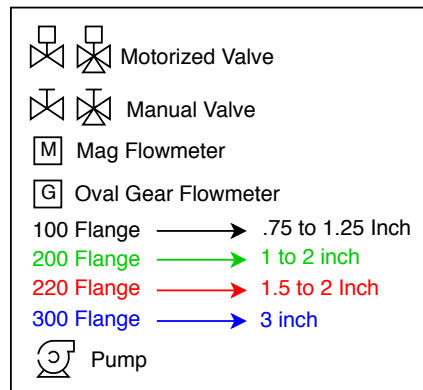


Turf Mixmate Fusion 3 Input with Fertilizer Plumbing Diagram

Diagram FS-3a



Mixmate Fusion and a Flow Stack. All chemicals are measured with gear type flowmeters. Dry fertilizers can be premixed and used as part of a blend. Water and fertilizer are measured automatically. The price of this configuration is: \$24,492 Consult your dealer for variations to this configuration. Does not include empty pipe sensor, electric pump control or a tablet.

The Rinse Pump supplies pressurized rinse water to the Inductor and jug rinse. A pressurized city water supply can be used instead of a rinse pump to supply the Fusion tank rinse. Requires 30 psi @ 30 gpm.

Kits: K1a, K3, K46, 2-K33, 2-K51, K40